



**Linnell Building, Osborne Street, Burton upon Trent, Staffordshire, DE15 0JL**

Linnell Building Tel: (01283) 239835 Fax: (01283) 239852

Evershed Building Tel: (01283) 239800 Fax: (01283) 239818

E-mail: [office@abbotbeyne.staffs.sch.uk](mailto:office@abbotbeyne.staffs.sch.uk)

Headteacher: Mrs A L Stoddart BA (Hons), NPQH, MBA

Thank you for your interest in working at Abbot Beyne

Abbot Beyne School is an 11 - 18 Comprehensive School with approximately 690 students on roll, situated to the south of Burton upon Trent. The school is very fortunate in its location with grounds of 19 hectares over-looking the River Trent, with fine views of the Staffordshire countryside and the Derbyshire hills. The school is split site with Years 7 - 9 predominantly based on the Evershed site and Years 10 - 13 based on the Linnell site.

The School is truly comprehensive with an intake that includes a varied mix of students from different areas within the town, and beyond into South Derbyshire. Approximately a fifth of our students come from Ethnic Minority Communities. The school welcomes and celebrates its diversity. In addition 31% of our students are classed as 'Pupil Premium'.

This year we achieved another set of excellent GCSE results with 57% of our students gaining Grade C or above in English and Maths.

We have reorganised our school into five Faculties to engender better sharing of good practice and support. These are Communications, STEM, Social Studies, Performance and SEN/Inclusion.

We are very proud of the fact that our Ofsted inspection in May 2017 judged us to be a good school in all areas. Amongst the many strengths highlighted, the report said,

- The school has improved securely ....
- Pupils now achieve better results in their GCSEs and make faster progress when compared to other pupils nationally
- Leaders and Governors have a strong understanding of the relative strengths & weaknesses of the school and work effectively to bring about further improvements
- Pupils are well behaved in lessons and also around the school site. The atmosphere is studious and orderly

Among our 104 staff there are a significant number of recently appointed colleagues. The school is fully committed to provide for the development needs of all its staff. The school

invests in and values its entire staff. We want our staff to enjoy their work and experience success.

This is an exciting time to join a forward looking, successful and supportive school, that aims to provide, expect and achieve the best for all.

What we stand for

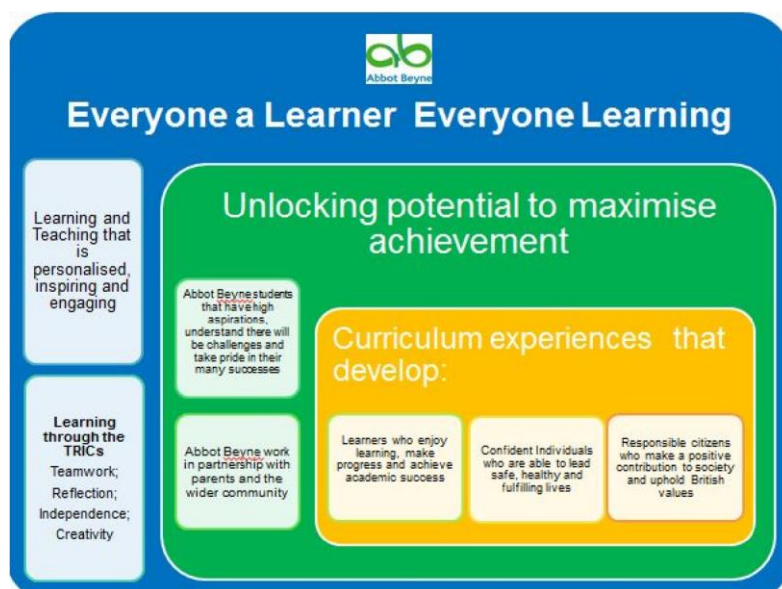


Our Mantra is: Everyone a Learner, Everyone Learning. Our School Improvement Plan has been written to ensure that our energies are focused on realising this for every member of our school community, maximising the outcomes for every student and making Abbot Beyne the school of choice.

At Abbot Beyne we believe that students are motivated to achieve their best through challenge, support and encouragement and learning that is tailored to their individual needs.

Our school vision places students at the heart of vision. We believe in unlocking potential to maximise achievement through:

- Personalised, inspiring and engaging learning
- Celebrating successes
- High Aspirations
- Partnership



Our broader school aims focus on four key areas:

**Learning and Teaching** - Embed outstanding Learning and Teaching in all lessons, with learning that is motivating and challenging and maximizes each student's potential.

Staff & students appreciate the elements that constitute outstanding learning and teaching – our Abbot Beyne Learning Model.

Staff are empowered to deliver outstanding lessons through quality training and personalised support.

**Curriculum** - Our curriculum model enables all students to achieve outstanding outcomes.

**Support & Inclusion** - Our students have access to varying levels of support to enable them to achieve outstanding outcomes.

Our inclusive ethos remains at the heart of everything we do, and develops active and positive partnerships with Parents/Carers, our Primary Schools and external agencies.

**Leadership** - We build outstanding leadership and management capacity across our school to ensure an organisation that is built on trust. We value, encourage and develop all members of the community to achieve outstanding outcomes.

**Environment** - We provide an ordered, caring community that celebrates success and values high standards.

We create and maintain an environment in which all have pride and which maximises Learning and Teaching.



#### Employer

We have a staff body of over 100 and with a growing role this looks to expand in the next few years. We value our staff and staff surveys recognise this. All teaching staff are provided with a laptop and an iPad. In addition there is a full and responsive CPD programme including through the National Forest Teaching School Alliance.

## Facilities

Abbot Beyne is split site with Years 7 - 9 predominantly based on the Evershed site and Years 10 - 13 based on the Linnell site. Faculties have dedicated rooms, and Art is based in the Linnell Building and Music and Drama in the Evershed building.

The buildings and grounds are maintained to a high standard with a continuing programme of maintenance and improvements. As well as dedicated ICT rooms, we have high quality managed wireless on both sites, and over the last four years have provided 1:1 iPads to staff and students in years 7 - 10 as part of our 1:1 learning strategy.

## Curriculum

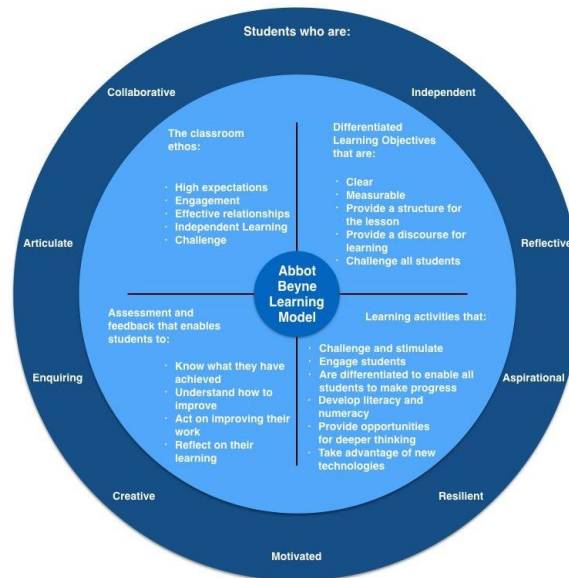
We offer a broad and balanced curriculum which maximises student achievement at each Key Stage. At Key Stage 3, students follow the National Curriculum and are taught in teaching groups across the range of subjects. In Year 7 our students have Skills of Success lessons - our innovative transition lessons that equips our students with the learning skills and habits they need to be successful learners. In Key Stage 4, our students choose from a range of mainly GCSE subjects, supplemented with a number of BTEC courses. For precise details of the curriculum offered in each year and subject, please see the Abbot Beyne website. Select subjects on the Homepage.

## Learning and Teaching

Our vision for outstanding Learning and Teaching at Abbot Beyne is characterised by engaging lessons that challenge and inspire all students; innovative use of technology to enhance and transform learning opportunities; active learning that provides opportunities for deeper learning experiences.



Our 100 minute lessons provide an effective framework for delivering this. To support our goal of delivering consistently great lessons, we have created The Abbot Beyne Learning Model. This articulates the ingredients of great learning.



Our programme of staff training and development is built around the Learning Model. We firmly believe in further developing the skills of our teachers as the best route to raising outcomes amongst our students. Training for our teachers consists of inset days, twilight training, whole-school training and external training. Our Learning and Teaching Communities (LTCs) have also been a key mechanism for delivering high quality staff CPD.

All teachers belong to an Learning and Teaching Community (LTC). We are currently coming to the end of our two year participation in a national research project with the Specialist Schools and Academies Trust (SSAT) delivered through our LTCs. Teachers meet for 75 mins once per month and reflect on their practice, discuss new teaching methods and commit to improve aspects of their practice. Teachers then take part in peer observations of each other as part of the observing and sharing of good practice.

We believe in not tying the hands of our teaching staff by insisting on a set lesson format or plan. However, we expect our teachers to deliver well planned lessons and promote the use of our five minute lesson planning format to focus staff on the key areas of planning that contribute to outstanding learning in the classroom.

Our system of classroom observation is designed to be supportive and developmental. As well as the Performance Management observations, members of the SLT undertake blinks (learning walks) and work scrutiny exercises. These have a specific focus (e.g. questioning) and allow us as a school to identify examples of good practice and areas to focus our CPD on in the future.

All of our Key Stage 3 students (and from September 2017 Year 10 too) have iPads to assist them in their learning. Teachers plan their lessons to take advantage of the many benefits such technology brings.



## Support and Guidance

The Student Support system is based on Key Stages, with Key Stage Leaders. The Student Support team is the key link between the Abbot Beyne and home. Students and parents are issued with a Progress Report six times a year which is used as the basis for mentoring and intervention systems to maximise student performance. To ensure that all students have the appropriate level and type of support they need, the extended team includes Special Educational Needs, Attendance Officer, Student Welfare Officer, and Administration Team. Abbot Beyne also works closely with external agencies. We recognise that the wellbeing of our students includes social, emotional and educational needs, and that these factors all contribute to maximising student success. It is through the building of positive partnerships at all levels that the students continue to fully embrace our TRICs values: Teamwork, Reflection, Independence and Creativity. We have a programme of student leadership and this year introduced PIXL Edge to all our Key Stage Three students.

## Mentoring

Abbot Beyne runs a mentoring programme in place of form tutors. Students are organised into small mentoring groups (about 10 students.) Every member of staff is a mentor and meet with their Key 3 students every Friday and their Key Stage 4 students every Monday. Mentoring is focused on reviewing progress from the previous week and setting academic targets for the coming week. The Key Stage three programme has been supplemented with the PIXL EDGE material this year.

## Sixth Form

Our Sixth Form is very strong. Ofsted recognised this in May 2017 and our value added score of +0.2 in 2016 demonstrates that it continues to be a strength. The Sixth Form curriculum offers a variety of BTEC and A level courses; with the qualification reforms, we offer predominantly A level courses. Alongside the formal curriculum our students participate in a wide variety of enrichment activities. Our Sixth Form students are also heavily involved in fundraising activities for charities such as Breast Cancer Awareness and the Burton Albion Community Trust. Our four House charities. Sixth Form students hold leadership positions, including Head Boy and Girl and House and Sports Captains.

## Sports Facilities

The Physical Education Faculty offers a wide and varied curriculum. Our extra-curricular sports teams have been very successful and follow a strong tradition of sporting excellence.

## Duke of Edinburgh Award Programme

Abbot Beyne has introduced a very successful Duke of Edinburgh Group. Students start at Bronze in Year 9 or 10 , move onto Silver and finally Gold.

## Enrichment programme

Abbot Beyne run a range of extracurricular opportunities including Sport, Music, drama and craft. We also run a reading challenge in partnership with Burton Albion. Enrichment Days take place in July as the School timetable is suspended and student choose a range of activities, trips and experiences to enrich the academic provision on offer. The days foster the development of excellent relationships between staff and students, something Abbot Beyne prides itself on, as well as providing an exciting and engaging experience for all involved.

## House System

Our House system was introduced in 2014, with students being allocated to one of four houses - Columba, Hercules, Orion and Pyxis, - which compete against each other in a range of competitions. Examples of events have included spelling bees, numeracy challenges, and fiercely fought sport competitions. The annual Sports Day takes place in July and is the centre piece of the House competitions. Charity events are an important aspect of the House system and students organise the Easter Fayre every year to raise money for our four House charities.

Annabel Stoddart  
Headteacher